



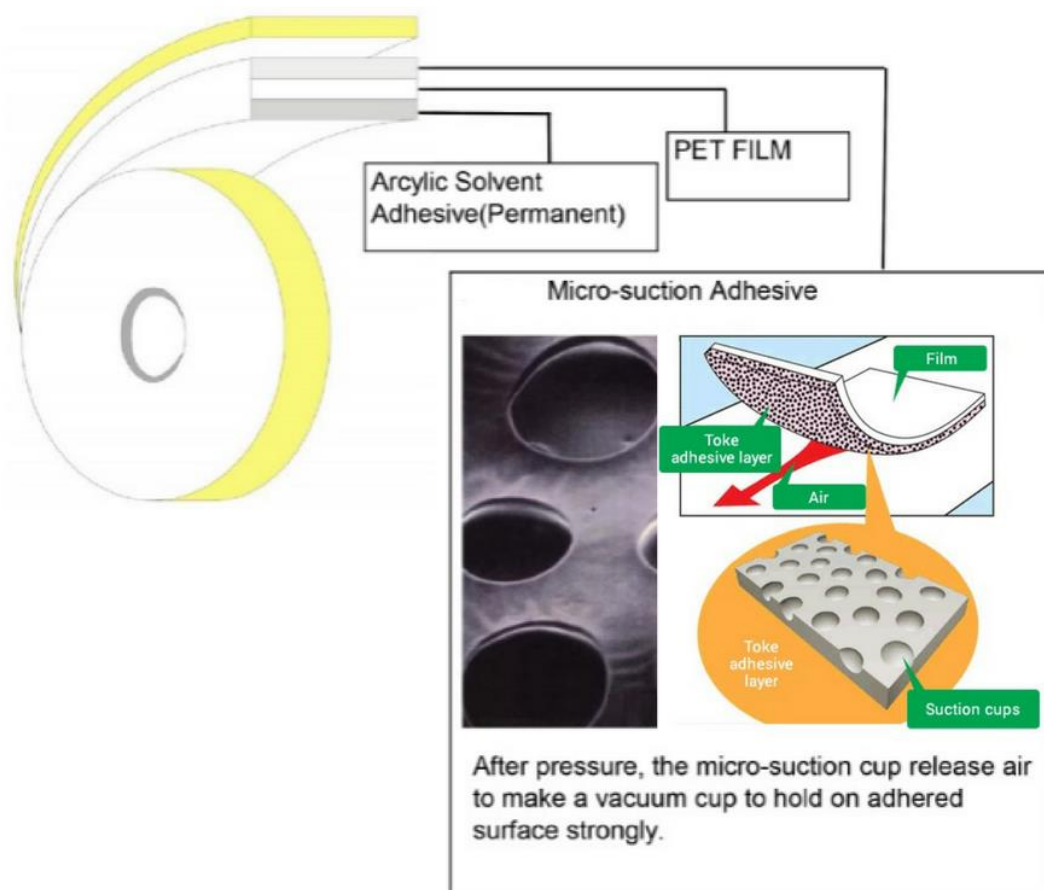
DOUBLE SIDED ADHESIVE MOUNTING TAPE WITH TOKE LAYER

Transparent, double-sided adhesive tape for clean, repeated mounting on smooth surfaces.

One side of the tape is coated with permanent acrylic adhesive that binds with the object (eg. document, graphic, PVC foam board signs or shapes). The other side is coated with an innovative adhesive TOKE layer that allows clean, repeated mounting on glass, plexiglass, furniture, walls or other flat surfaces.

Adhesive layers are protected with a silicone paper release liners.

The product is available in 0.98 x 25m and 0.98 x 50m rolls – we can cut tape widths according to client specification to a minimum of 4 mm.



Key benefits:

- reusable, allows easy removal and repeated mounting objects mounted by the TOKE adhesive tape can be easily removed and mounted again, the TOKE layer retains its adhesive properties for 2 years (provided it is kept free from dirt and contamination and applied on clean, flat surfaces)
- leaves no residue or surface damage upon removal the TOKE mounting tape leaves no residue, traces or damage on glass, furniture or other surfaces, there is no need for cleaning or renovation

Application areas:

- mounting small-size info and promo materials in points of sale (on windows, doors, etc.)
- decoration mounting (on furniture, walls, etc.)
- mounting signs, letters and shapes on indoor flat surfaces



Technical parameters:

- substrate: PET film (36 microns)
- permanent adhesive: acrylic adhesive
- reusable adhesive: the TOKE layer (retains adhesive properties for 2 years)
- release liner: silicone paper 125 gsm
- roll dimensions: 0.98 x 25m or 0.98 x 50m (we can cut widths according to client specification).